



3rd · 8th
June 2013

NATIONAL TRANSFER ACCOUNTS

Barcelona 2013

Faculty of Economics and Business, UB

www.ntaaccounts.org

Health and education profiles in Kenya: Policy implications

Moses Muriithi

Reuben Mutegi

Germano Mwabu

University of Nairobi, Kenya

- INTRODUCTION

- The Kenya Vision 2030 recognizes that the country's main potential lies on its people
- Vision identifies human capital development as a key foundation for national socio-economic transformation
- Since 1994-several policy interventions - aimed at promoting human capital development especially in the area of education and health

Main of Education policies

1. The Free Primary Education targeting primary education
2. Subsidised Secondary Education targeting secondary education
3. Introduction of the parallel (module ii) degree program

Education Policies...

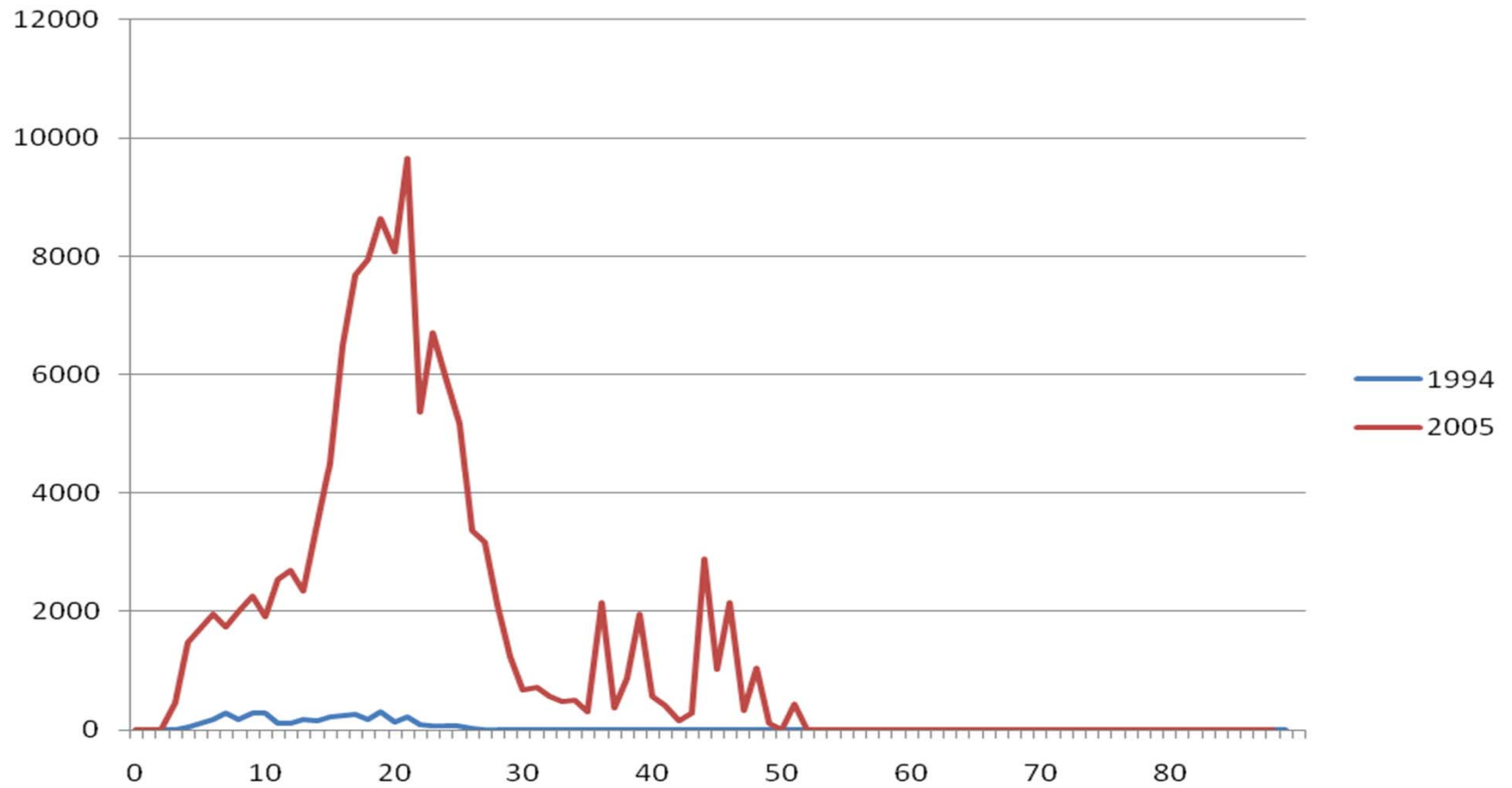
4. The establishment of Higher Education Loans Board (HELB) to offer loan to university students both in public and private
5. The university charter policy which encourages the establishment of many universities and making them autonomous

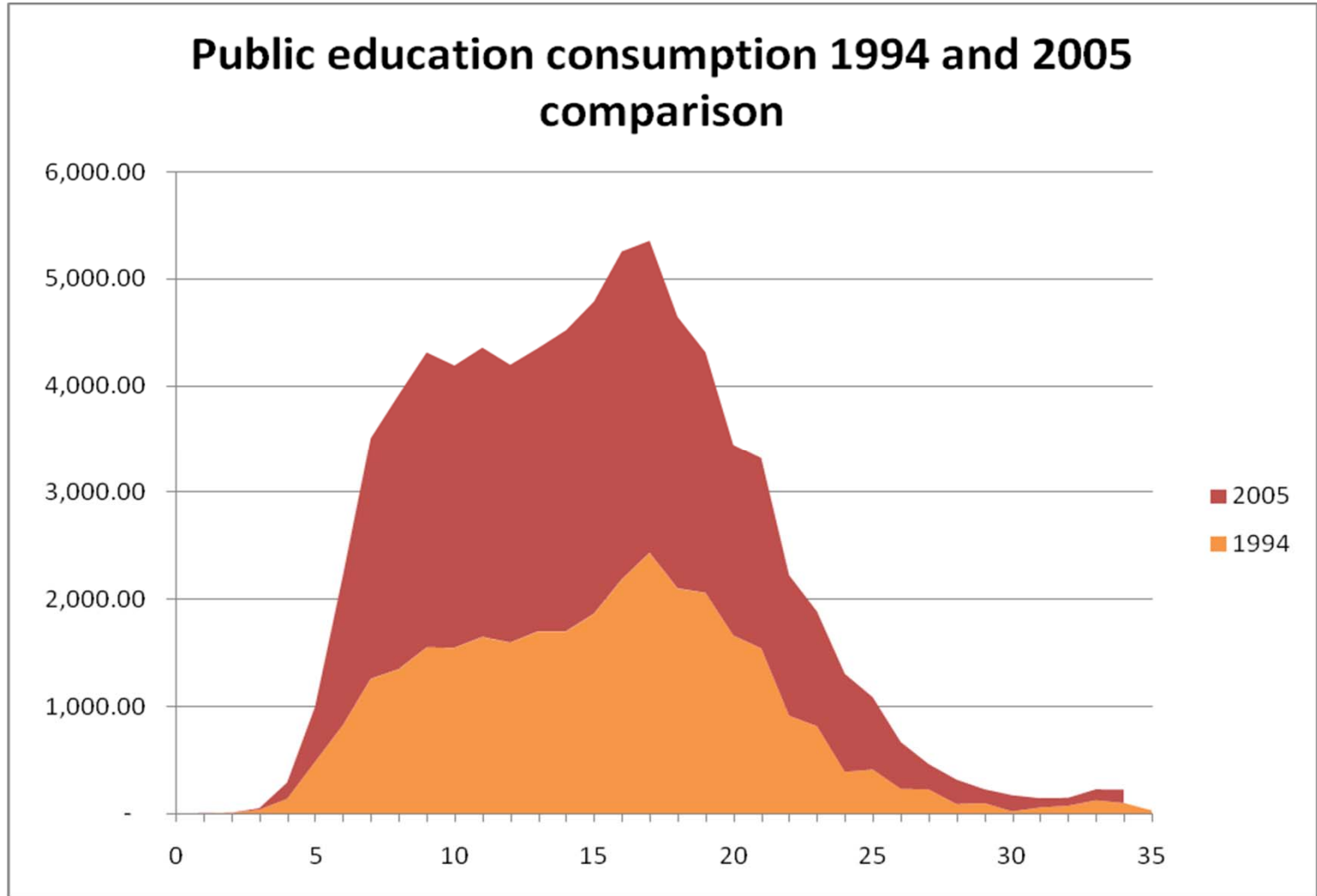
Policies....

- Comparison of education expenditure profiles for two periods separated by a decade demonstrates probable effects of policy change on education consumption profiles
- *use 1994 and 2005/06 household surveys to approximate the effect of these policies*

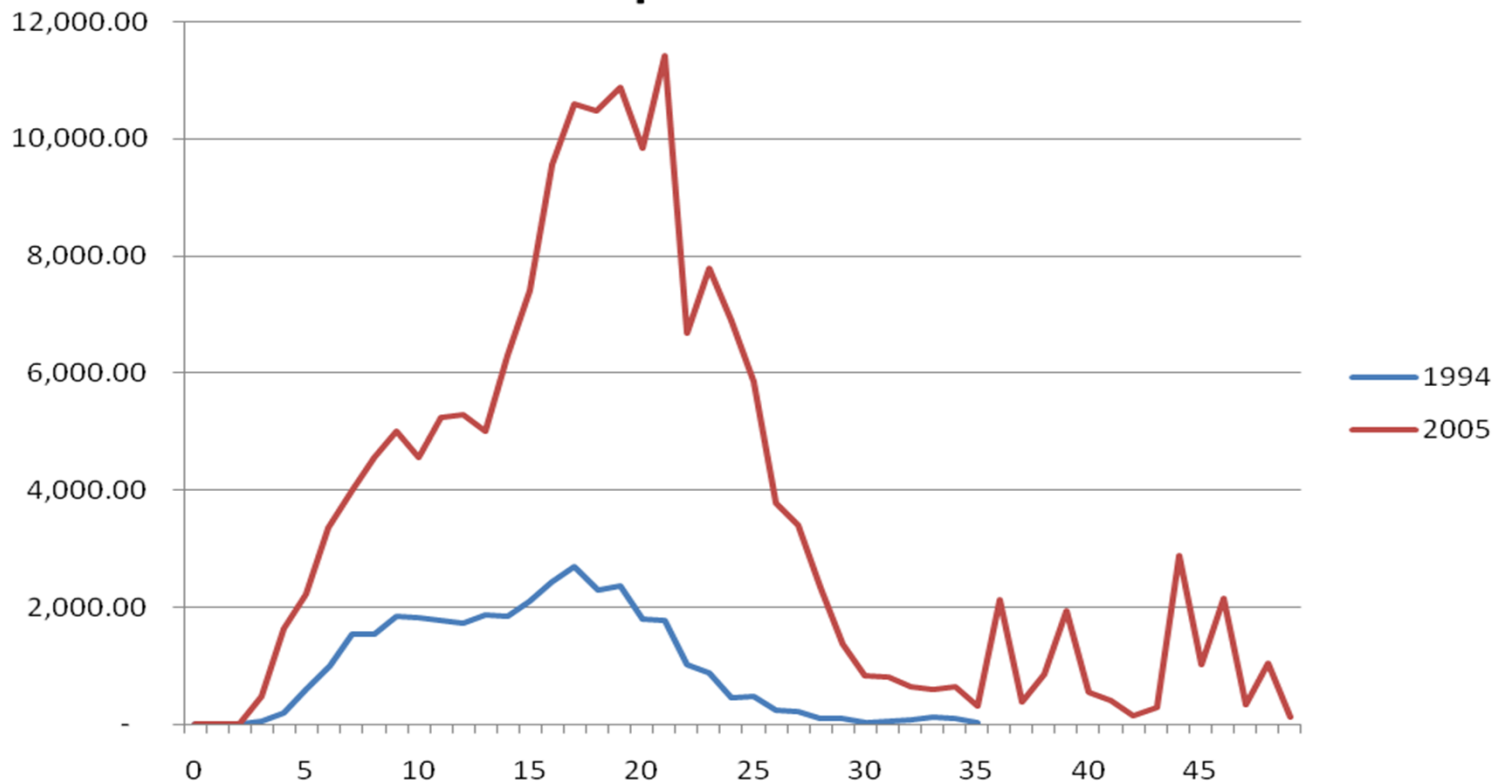
Lets see

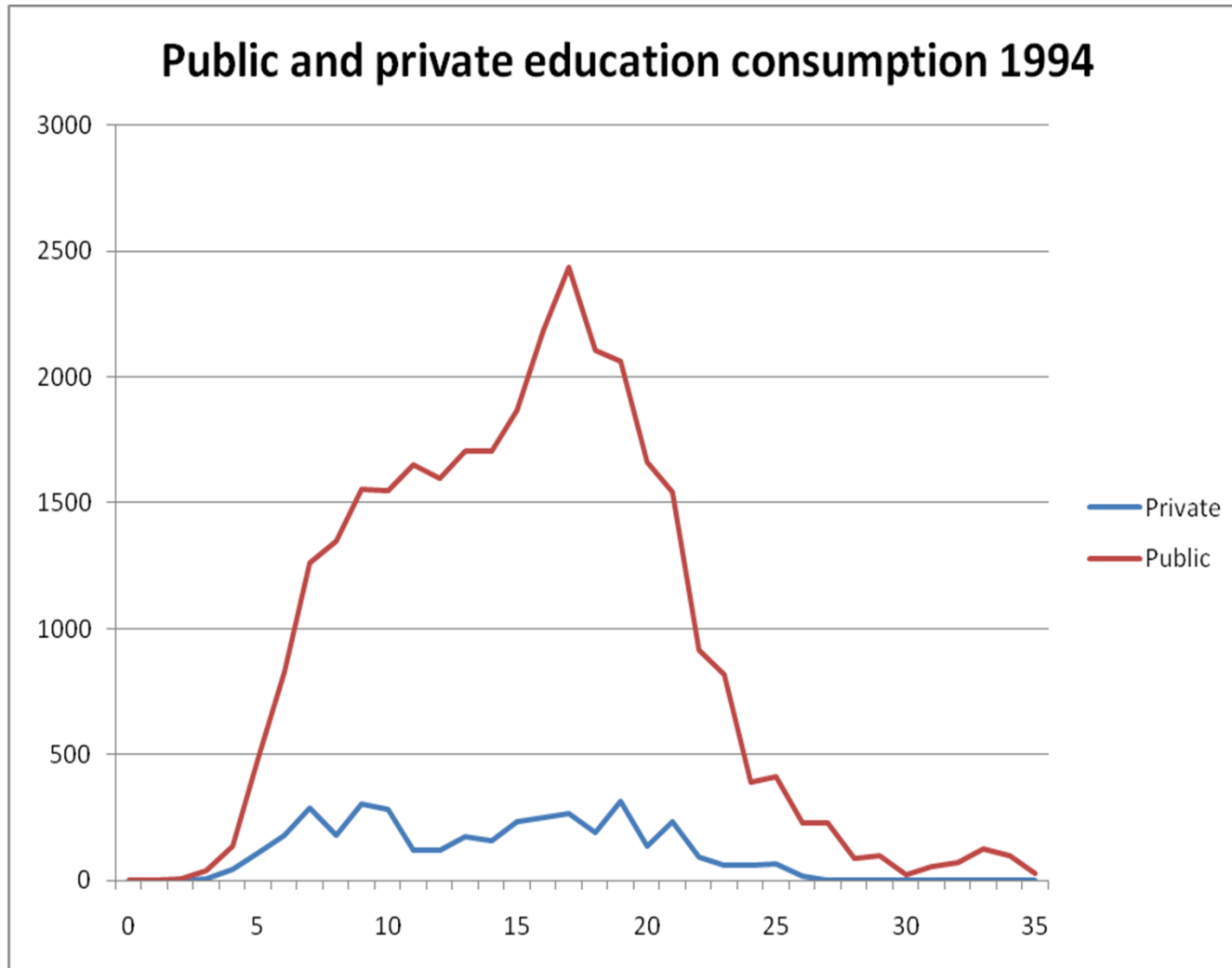
Private education 1994 and 2005 comparison

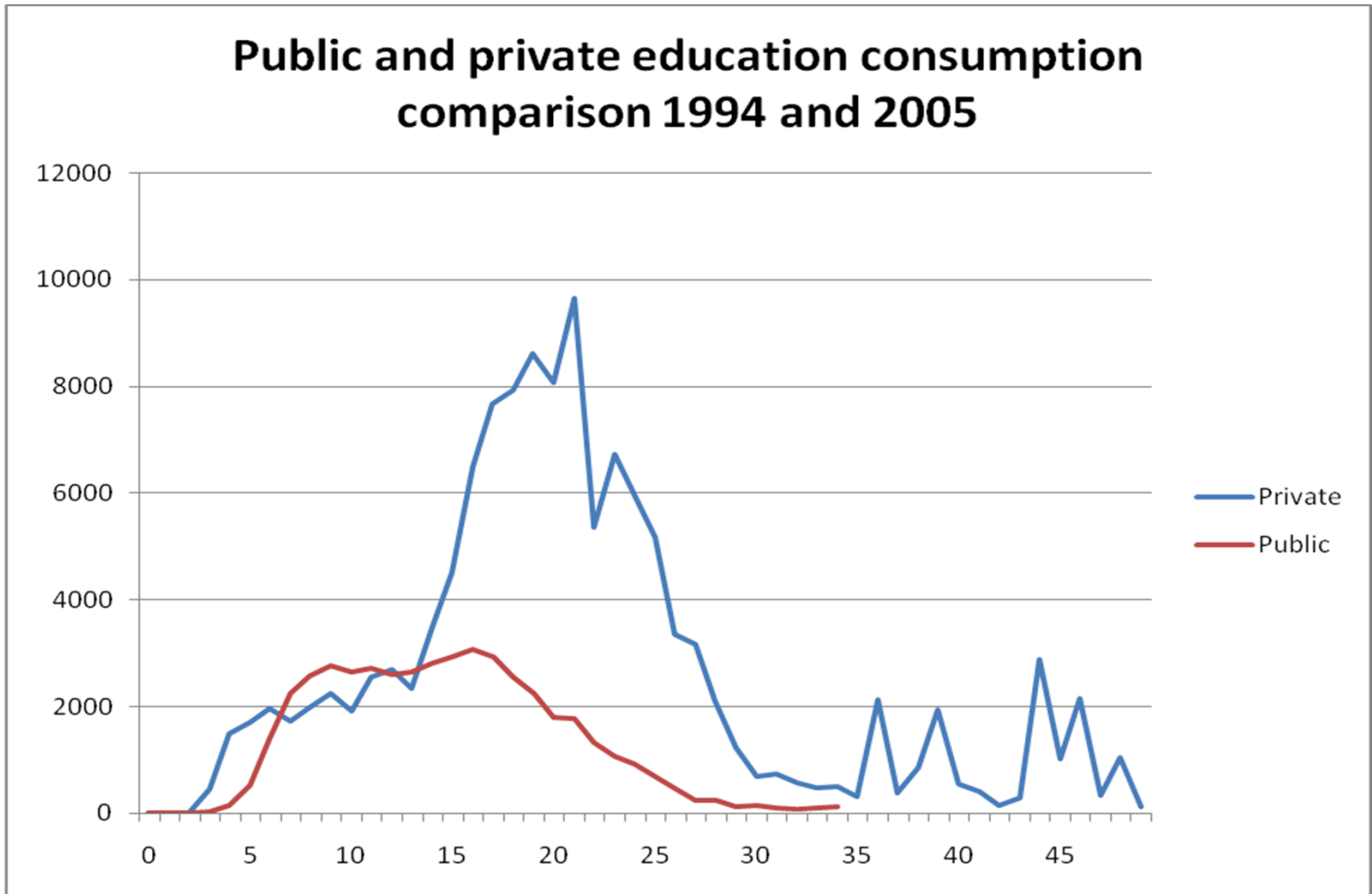




Total education consumption 1994 and 2005 comparison







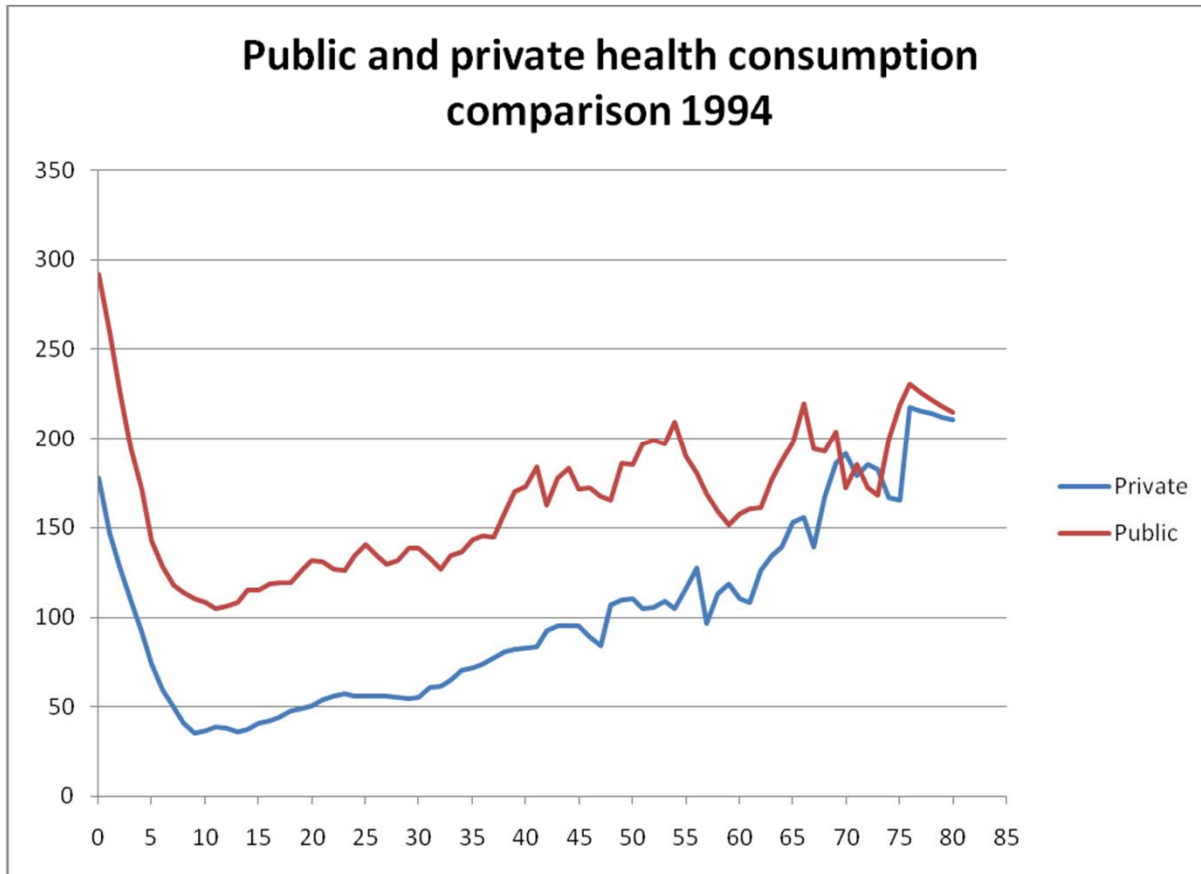
Key Healthy policies

- Human health has a major role to play in economic develop
 - There is a direct link between the health of a population and its productivity ment(Schultz, 1993).
 - Kenya has continued to design and implement policies aimed at promoting coverage of and access to modern healthcare in an attempt to attain the long-term objectives of health for all.

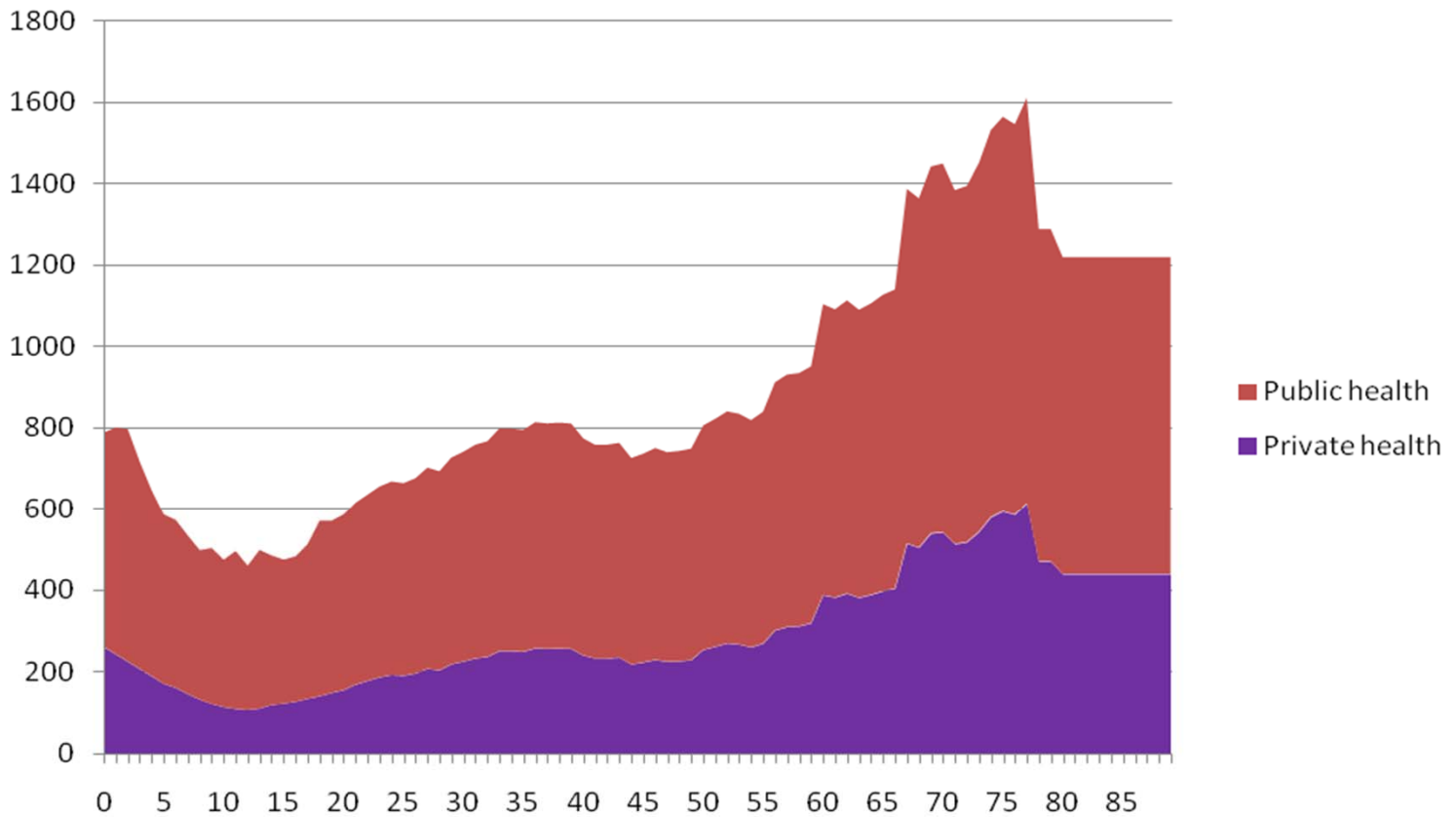
Health Policies since 1994....

- Strengthening Ministry of Health management capacities with emphasis at the district level.
- Increasing emphasis on maternal and child health and family planning services.
- Increasing inter-ministerial coordination of health service delivery
- Increasing alternative financing mechanisms.

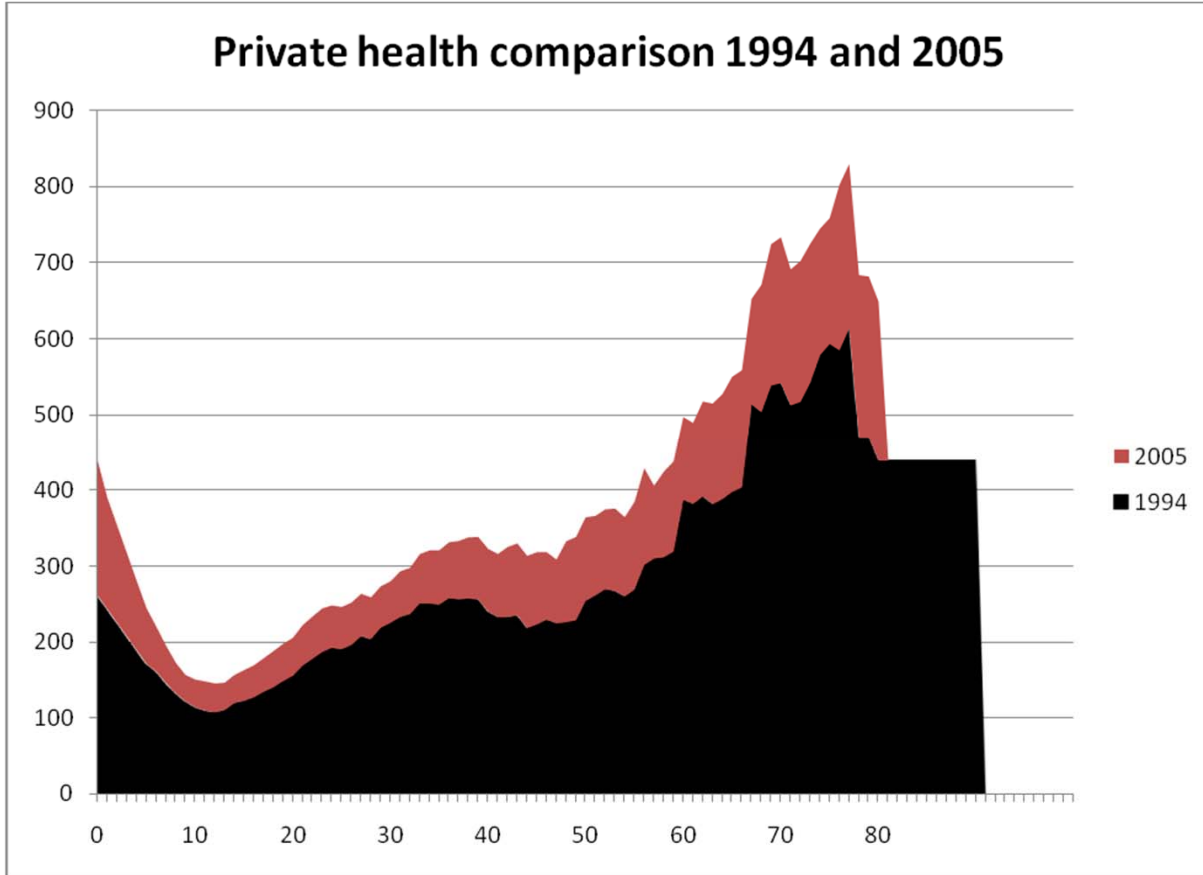
Have some of these policies contributed to our current trend in health consumption? Perhaps by approximation!

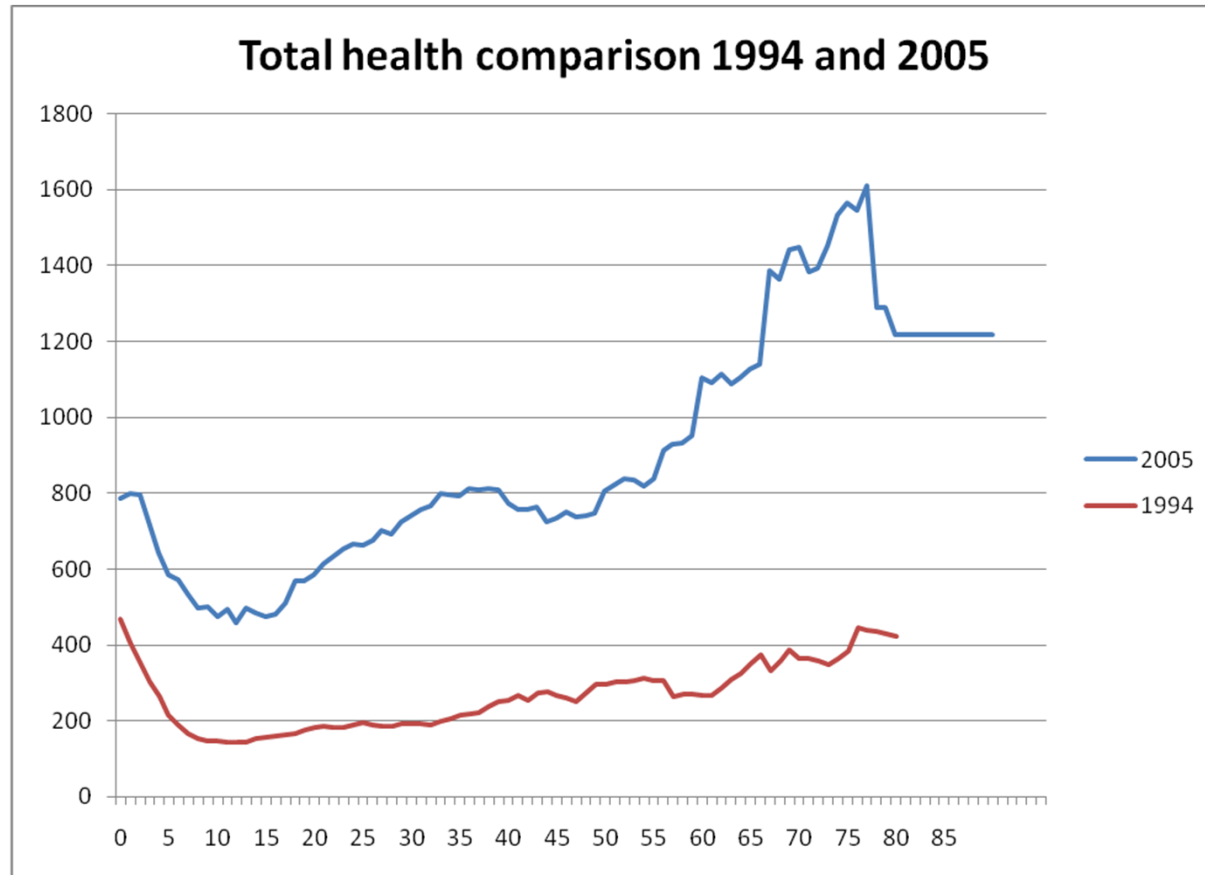


Public and private health consumption comparison 2005

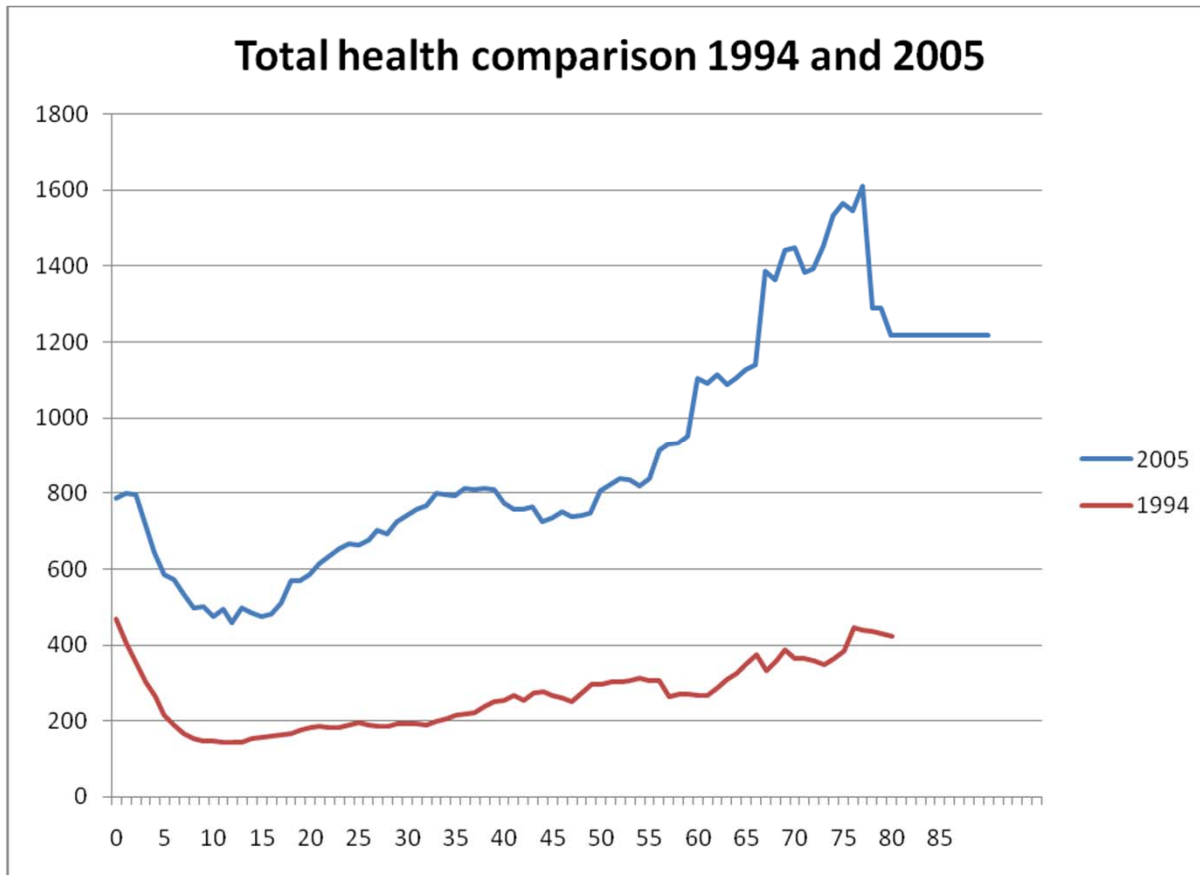


Private health comparison 1994 and 2005





Total health comparison 1994 and 2005



Main conclusions

1. Generally, but to a limited extent, the NTA methodology can be used to evaluate effectiveness of policies
2. The profiles on education and health consumptions can be used to identifying policies that should be continued or supported